

## ***Water Specialist 1" & 1.25"*** ***Motorized Alternating Valve***



**Order No. V3069FF • F x F**

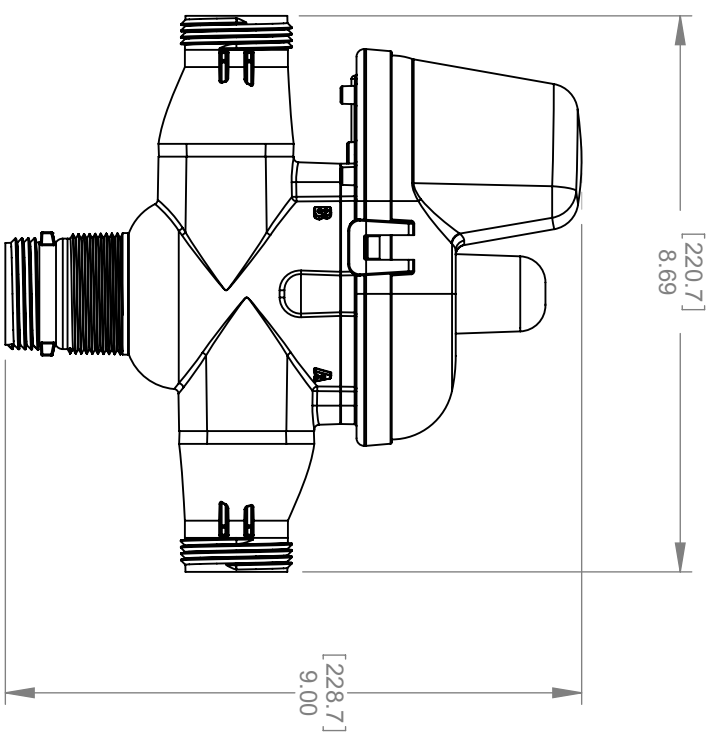
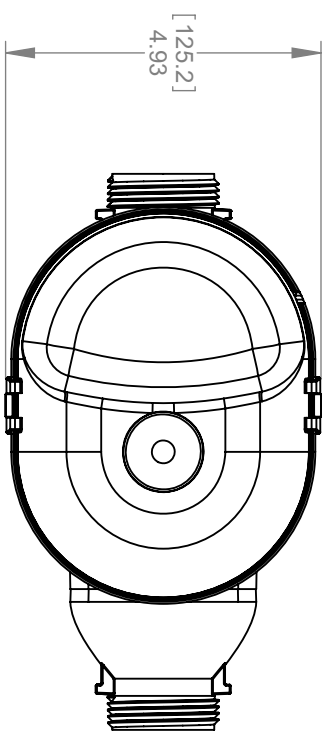
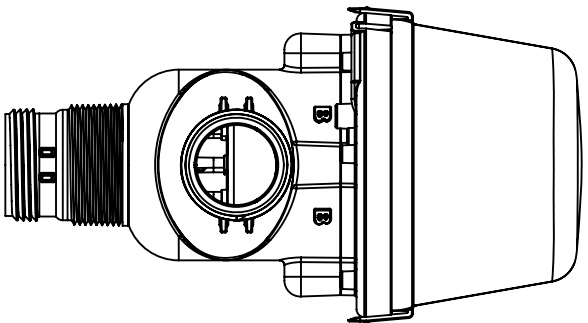


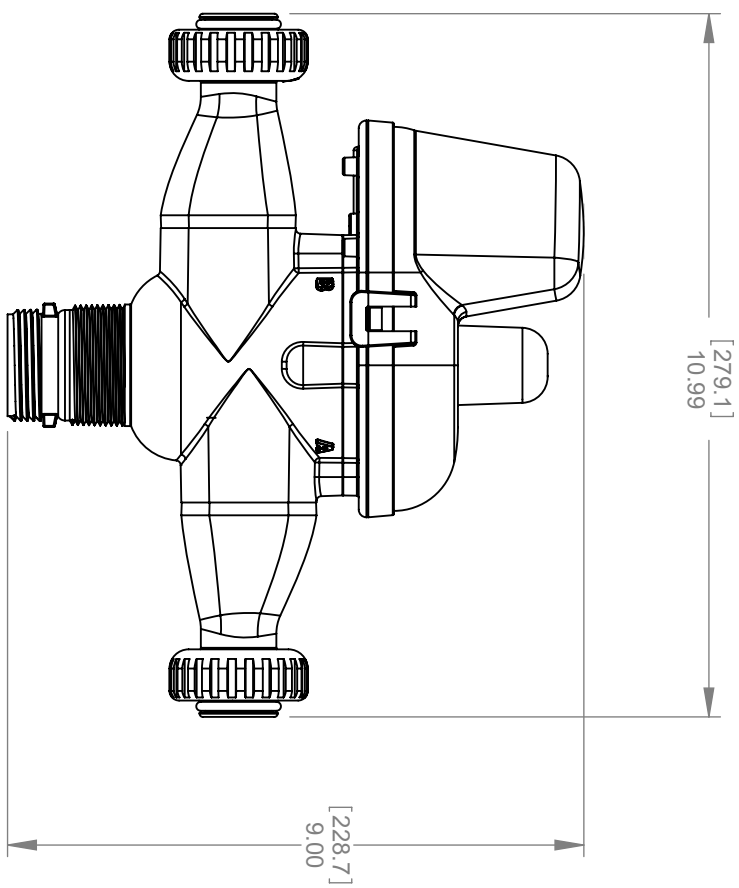
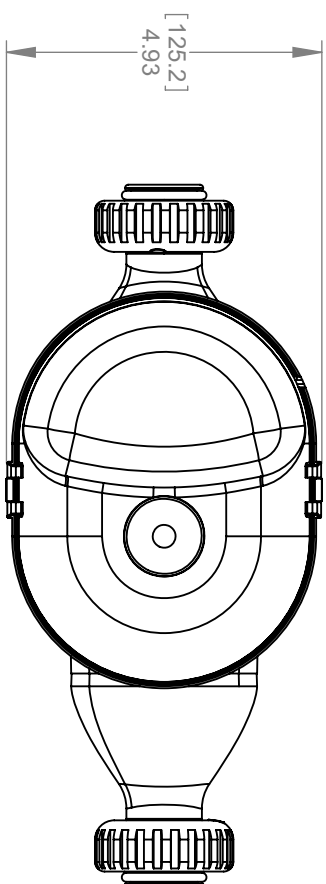
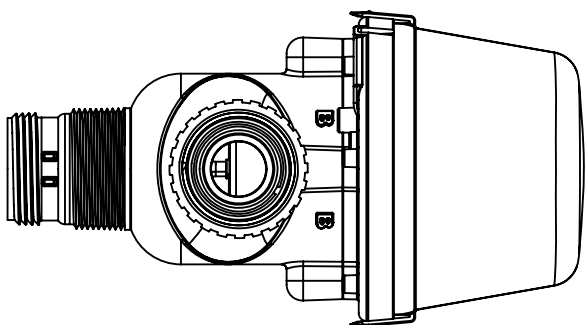
**Order No. V3069MM • M x M**

- Allows for twin alternating system
- Low voltage drive assembly controlled by valves circuit board
- Utilizes WS1 and WS1.25 Control Valve Fittings
- Full 1.25" ports for minimal pressure loss
- Provides choices of treated or non-treated water regeneration
- Proven and reliable Clack DC drive assembly
- Can be utilized with a single control valve system to accommodate a clean water source for regeneration



**EXAMPLE OF A TWIN CONFIGURATION**





**Order No. V3069FF • Description: MOTOR ALT VLV 1/125 F-F**  
**or**  
**Order No. V3069MM • Description: MOTOR ALT VLV 1/125 M-M**

- Plan the position of the motorized alternator valve and control valves (each with their own meter) carefully because of the following:
- The 8' alternator valve motor cable (V3476) must be threaded through the back plate and connected to the two pin connector labeled DRIVE on the ALT A control valve board. Approximately 1' of the cable length should be allowed for weaving through the back plate.
  - The 8' interconnect cable (V3474-01) must be threaded through the back plates and connected to the three pin connector labeled INTERCONNECT CABLE on both the ALT A and ALT b control valves. Approximately 2' of the cable length (1' for each control valve) should be allowed for weaving through the back plate. NOTE: Although the interconnect cable V3474-01 has two wires, it must be connected to the three pin connector.
  - The 15' AC Adapter or power cable must be thread through the back plate of both the ALT A and ALT b control valves. Approximately 1' of the cable length should be allowed for weaving through the back plate. The AC adapter should be installed to a properly grounded, not switched, outlet.

Try to allow sufficient slack in cables so cables may be zip tied to plumbing lines to prevent the cables from being accidentally pulled. Where necessary, break out the tab in the back plate to allow two cables to be woven through the same slot in the back plate. No more than two cables may be woven through one back plate slot. To help prevent damage to cables, allow solder joints to cool or solvent cement joints to cure after completing the various service, drain and regenerant plumbing connections. Thread the various cables through the appropriate back plate(s) and connect as described in the bullets above.

**Service Water Plumbing Connections**

See exploded view for fitting connections.

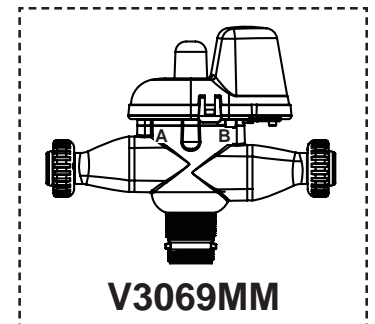
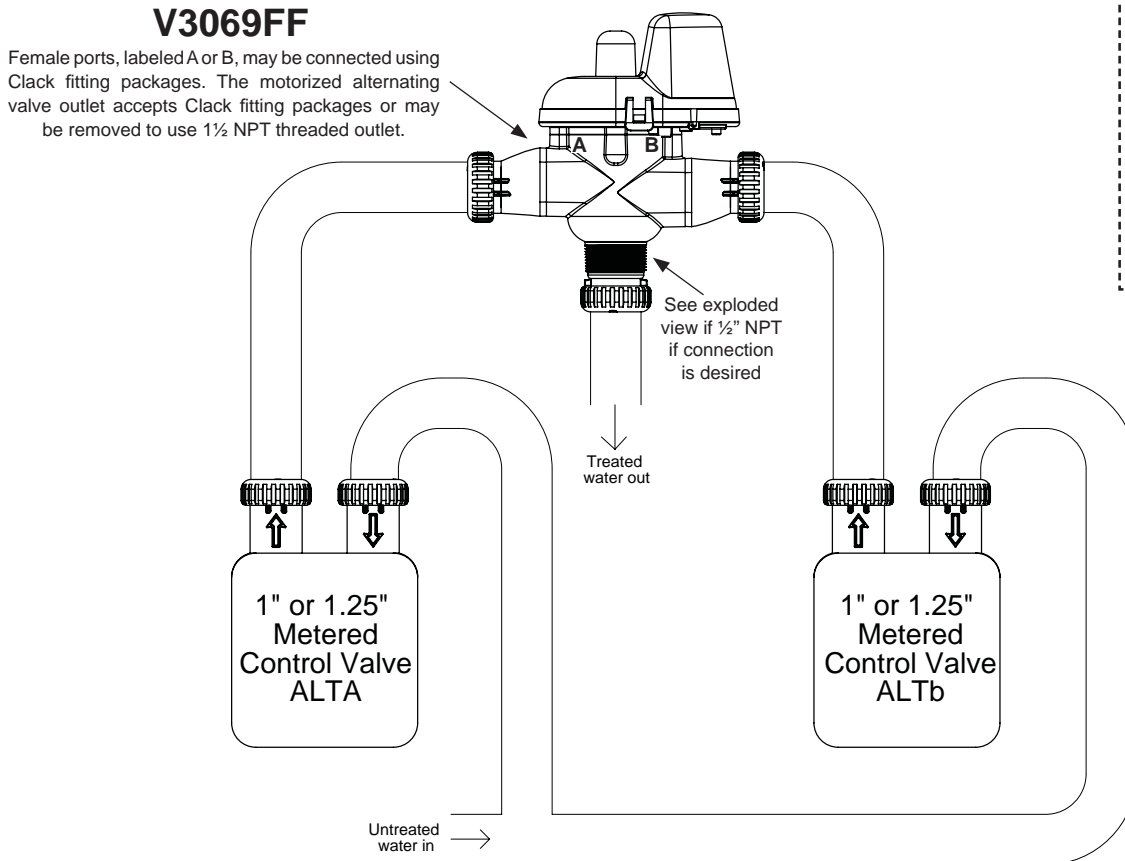
Connect the water service line to the water inlet of control valves programmed as ALT A and ALT b.

Connect the outlet of the control valve programmed as ALT A to the port labeled A on the alternator valve.

Connect the outlet of the control valve programmed as ALT b to the port labeled B on the alternator valve.

ALT A control valve is in service when the threaded portion of the motorized alternating valve drive gear is not visible in the clear dome of the cover.

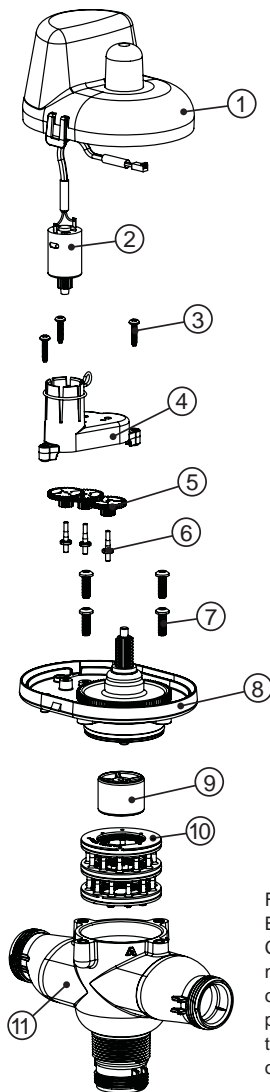
If the control valve manual does not include instructions for setting up ALT A and ALT b software, visit [www.clackcorp.com](http://www.clackcorp.com) to download the current copy of the instructions.



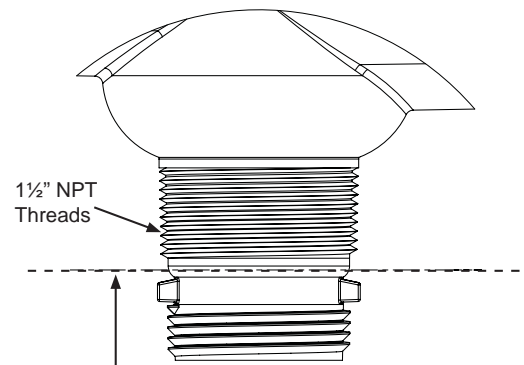
Male ports, labeled A or B, may be connected directly to a Clack 1" or 1.25" control valve outlet or to a V3191-01 vertical bypass adapter assembly. The motorized alternating valve outlet accepts Clack fitting packages or may be removed to use 1/2" NPT threaded outlet.

Order No. V3069FF • Description: MOTOR ALT VLV 1/125 F-F  
 or  
 Order No. V3069MM • Description: MOTOR ALT VLV 1/125 M-M

Drawing No.	Order No.	Description	Quantity	
			V3069FF	V3069MM
1	V3073	MAV/NOHWBY COVER ASY	1	1
2	V3476	WS MOTOR ASY 8 FT	1	1
3	V3592	SCREW #8-3/4 PHPN T-25 SS	3	3
4	V3262-01	WS1.5&2ALT/2BY REDUCGEARCVASY	1	1
5	V3110	WS1 DRIVE GEAR 12X36	3	3
6	V3264	WS2 BYPASS REDUCTION GEAR AXLE	3	3
7	V3527	SCREW 1/4-20 X 3/4 BHSCS SS	4	4
8	V3072	MAV/NOHWBY 1/125/15 DRIVE ASY	1	1
9	V3506-01	MAV/NOHRD 1/125/15 PISTON	1	1
10	V3074	MAV/NOHWBY 1/125/15 STACK ASY	1	1
11	V3504FF	MAV BODY 1/125 ASY F-F	1	N/A
12	V3504MM	MAV BODY 1/125 ASY M-M	N/A	1
13	V3151	WS1 NUT 1 QC	N/A	2
14	V3150	WS1 SPLIT RING	N/A	2
15	V3105	O-RING 215	N/A	2
Not Shown	V3474-01	WS ALT MAV 1/125 CORD 8FT BLK	1	1

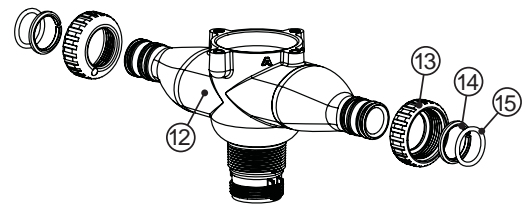


Female ports, labeled A or B, may be connected using Clack fitting packages. The motorized alternating valve outlet accepts Clack fitting packages or may be removed to use 1/2" NPT threaded outlet.



Quick Connect Nut Threads can be cut off to allow access to 1/2" NPT Threads. Deburr and clean edge after cutting.

**NOTE:** Teflon tape is required when using the 1/2" NPT Threads.



Male ports, labeled A or B, may be connected directly to a Clack 1" or 1.25" control valve outlet or to a V3191-01 vertical bypass adapter assembly. The motorized alternating valve outlet accepts Clack fitting packages or may be removed to use 1/2" NPT threaded outlet.